

PRODUCT CATALOG

BMV Medical Systems



DIGITAL. POWERFUL.
CUSTOMIZE

Solutions designed with
a healthcare professional's
needs in mind.



www.bmv.cc



BPU 60

EMPOWERING

all your clinical needs

Mobility Innovative Design

- ▶ Light Weight (7.5kg)
- ▶ 15" High Resolution LED (rotatable 0°~45°)
- ▶ Built-in Battery(120 minutes) for off-site, emergency care
- ▶ Dual active probe connectors
- ▶ Built-in probe holders
- ▶ Rich Peripherals Ports (LAN, VGA, HDMI, USB, Video, Remote)
- ▶ Ergonomic Trolley(Accessory box, printer&probe holders)
- ▶ Clear imaging quality with more than 12 different professional transducers



New PRODUCT

The BPU60 provides all the power you need for today's challenging clinical environment, yet remain ultra-portable, ultra-affordable. With its cutting-edge imaging technologies, comprehensive functions, precise and intuitive workflow, ergonomic and eco-friendly design, versatile transducers for different body scans and clinic departments, for example emergency, hospitals, clinics, out calls, etc . We firmly believe the BPU60 to be the very best full-body portable ultrasound in its class today.

Advanced Technologies

- ▶ Digital front-end technology
- ▶ Multi-beam processing technology
- ▶ Tissue harmonic imaging
- ▶ Invert harmonic imaging
- ▶ Speckle noise reduction technology
- ▶ Spatial compounding imaging
- ▶ High precision dynamic focus imaging
- ▶ iBscan™ quick image optimization technology

Full High-tech Probes Family Comprehensive Applications

BMV

www.bmv.cc



New PRODUCT

BPU 90

Redefine Price/ Performance
the console color Doppler system



SlimDesign



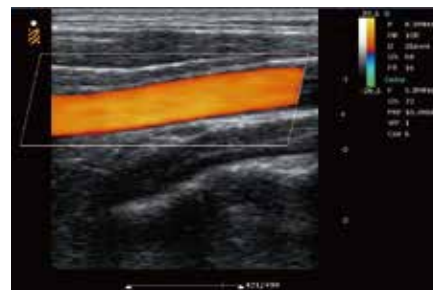
- ▶ 15" High Resolution LED(-90°~90° rotatable, 0°~90° foldable)
- ▶ Replaceable probe holder
- ▶ Cable management
- ▶ Four probe connectors
- ▶ Backlit Keys and four wheels with locks
- ▶ Built-in Battery(120 minutes) for off-site, emergency care(option)
- ▶ Rich Peripherals Ports (LAN, VGA, HDMI, USB, Video, Remote, DICOM 3.0, AVI/JPG, PDF report)

New PRODUCT

BPU90 redefines price and amazing performance with practical design fundamentally new sonography technology, coupled with rich of experiences in technology, excellent performance, comprehensive clinical applications, outstanding image quality, stable operation system and durable material processing technology, which can meet different needs from different departments in hospitals. We firmly believe the BPU90 to be the very proven and convincing advantages of the unprecedented full-body trolley ultrasound in its class today.

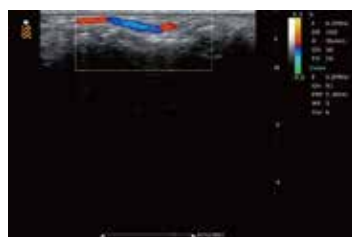
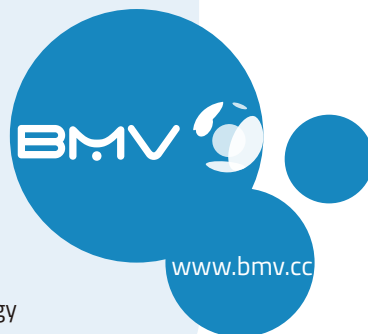
Confidence for **Diagnosis**

BMV patent imaging technology drives BPU90 image clarity and resolution by significantly reducing visual clutter



Advanced Technologies

- ▶ 64 phys. channels
- ▶ Digital front-end technology
- ▶ Multi-beam processing technology
- ▶ Tissue harmonic imaging
- ▶ Invert harmonic imaging
- ▶ Speckle noise reduction technology
- ▶ Spatial compounding imaging
- ▶ High precision dynamic focus imaging
- ▶ iBscan™ quick image optimization technology



Efficient Workflow

- ▶ Streamlined process, six one key
- ▶ Shortcut key for quick reaction
- ▶ Automatic spectrum calculation
- ▶ Automatic saving for preset or to default status
- ▶ Fast save and fast review for current patients
- ▶ User-friendly interface
- ▶ Efficient date management

New PRODUCT

MX10

Wireless Color Doppler system

- ▶ Unmatched 2D, colors Doppler, 4K resolution, and best-in-class processing
- ▶ Unbelievable experiences thanks to exceptional performance Modular, Maintenance-free, future-proof platform
- ▶ Broad-bandwidth phased/linear/curved array transducer(12 to 1 MHz operating frequency range)
- ▶ Wireless charging, 8 hours working time
- ▶ Wide range of clinical applications such as: Cardiac, Abdominal, Carotids, Thyroid, Lungs, Soft Tissue and more
- ▶ Can be used by cardiologists, general practitioners, OB/GYN, primary care emergency physicians and intensivists in a wide range of settings
- ▶ Rugged Design, cleaned with hospital grade disinfectants
- ▶ Connectivity: Export studies via MicroUSB or DICOM, Print to wireless printers, share, send and archive images, display images through HDMI port
- ▶ Helps to speed up your workflow with immediate access to critical decision making technology
- ▶ Support optional video glasses, laptop, tablet or smartphone, waterproof tablet
- ▶ BMV Service & Support: Inclusive wireless upgrades, backed by a full 2-Year Warranty from BMV



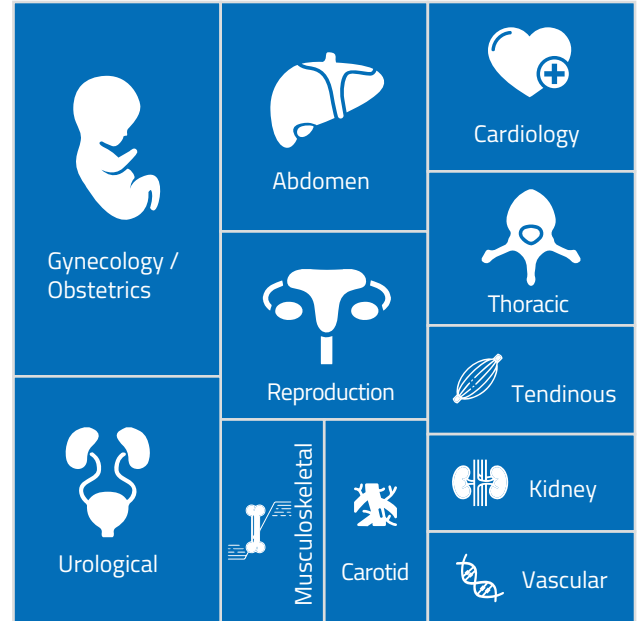
MX8

Pocket Color Doppler Ultrasound

- ▶ Versatile and easy to use
- ▶ App-based mobile ultrasound, ready when you are
- ▶ Meet patients at the point-of-care, make a faster diagnosis, and deliver care whenever it's needed.
- ▶ Incredible image quality
- ▶ Broadband curved/linear array transducer(18 to 1 MHz operating frequency range)
- ▶ 2D, color Doppler(MX8), advanced harmonic imaging
- ▶ High resolution imaging for shallow applications: Soft Tissue, Vascular, Superficial, Musculoskeletal, and Lung
- ▶ Center line marker, also deeper applications: abdominal, gall bladder, OB/GYN and lung imaging preset optimizations
- ▶ Center line marker
- ▶ USB-C transducer with replaceable cable



The MX10 together with MX8 competes most closely with the popular GE Vscan Extend and SonoSite iVIZ handheld ultrasound machines.



New PRODUCT

MX5 Plus Go

Pocket Color Doppler Ultrasound

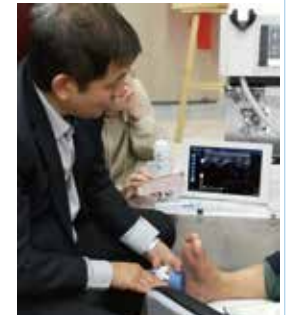
MX5 Go series is App-based mobile ultrasound, it can be easily diagnosed by connecting the transducer to a compatible smart mobile device via USB Type-C.

Our MX5 Go series of ultrasound scanner has been successfully widely used in the medical and veterinary field. With BMV's rich product design experience and mature ultrasound imaging technology, the use function of MX5 scanner is almost close to GE Vscan Extend, Philips Lumify and Butterfly iQ. In addition, MX5 is a very high cost-effective portable ultrasound machine with high quality and low price advantages.

- ▶ Image mode: B, D, C, M
- ▶ Pre-registered Android, Windows Software
- ▶ Main-board
- ▶ 15-2 Mhz, 128 elements, Scan depth: 1-28cm;
- ▶ lbcear: Smooth Uniform Tissues;
- ▶ S-crystal technology: broadband frequency response and higher sensitivity
- ▶ USB-C transducer with replaceable cable



Price/Performance
Equivalent to more expensive machines



New PRODUCT

- Black/White system MX5 Go version available.
- 80 elements B/W system version available.
- iBClear™ Technology.



C5-2 5-2 Mhz Curved

Application:
abdominal, musculoskeletal,
nerve, ob, gyn

Radius:60 mm, Element: 128
Scan depth: 6-24cm



L12-5 12-5 Mhz Linear

Application:
lung, musculoskeletal, nerve, ophthalmic,
small parts, arterial, venous

Length: 25 mm, Element: 128
Scan depth:2-7cm



L10-5 10-5 Mhz Linear

Application:
lung, nerve, small parts, arterial,
venous

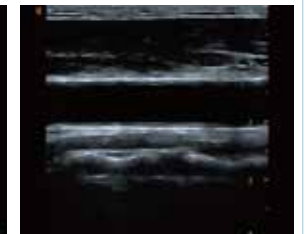
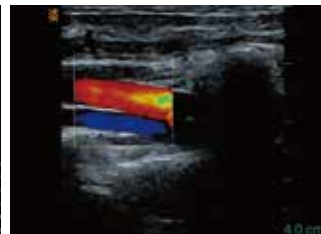
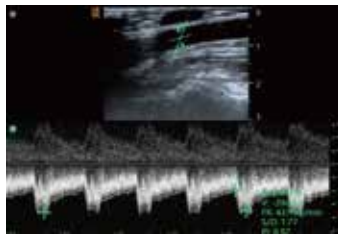
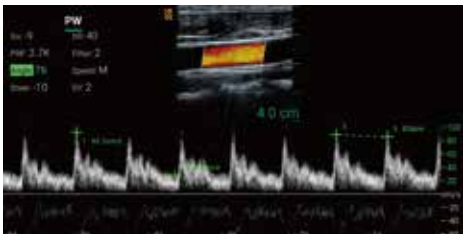
Length:38mm, Element: 128
Scan depth: 2-7cm



C7-3 7-3 Mhz Curved

Application:
abdominal, neonatal, nerve, venous,
arterial, cardiology (vet)

Radius: 20 mm, Element: 128
Scan depth:2-10cm



Wechat



Download and intall APP



BMV Medical Corp.

Office Add: Flat A, 5/F., Unionway Commercial Centre, 283 Queen's Road Central, Hong Kong

Factory Add: BMV of Yinjin Building, Baoan Centre District, Shenzhen 518010, China

Tel: +86 (0755) 85275443 Fax: +86 75526564580

Contact: Mr. David Luo, CEO

Mobile/WhatsApp: +8613500002887

Email: sales@bmv.cc

Website: www.bmv.cc